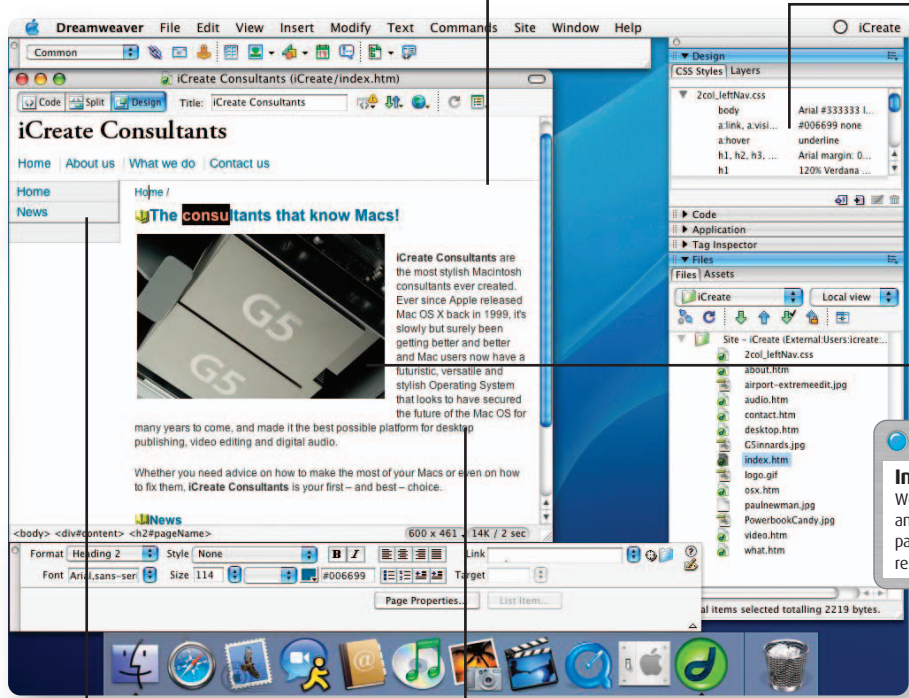


**Manage a whole site**  
**A complete design solution**  
 Using Dreamweaver, we've been able to create a whole Web site, including pictures, a style sheet and HTML pages, then linked them all together.

**Quick and easy**  
**Doing it in style**  
 Dreamweaver's WYSIWYG stylesheet handling means we've been able to completely customise how every page in the site appears. If we change the file, everything changes.

**Knowledge Base: Graphics formats**  
**GIF vs JPEG**  
 There are two main formats to choose from when creating graphics for your Web site: GIF and JPEG. JPEG is the best choice for most graphics, since it supports millions of colours and different compression levels. GIF, however, only has one compression level, which isn't as good as that used by JPEGs, and can only cope with 256 different colours (it's your choice which). But GIF does have two big advantages over JPEG: you can animate GIFs and make parts of them transparent. Also, GIFs of graphics with limited numbers of colours are smaller than JPEGs, making the format ideal for logos and illustrations.



**Pictures as links**  
**Image is everything**  
 We've been able to place images on pages and make them 'clickable' to link to other pages. When they've been too big, we've resized them - in Dreamweaver.

**Navigation secrets**  
**Rollovers without images**  
 Along with a global menu bar at the top, we've created a vertical menu bar down the side that looks like an image rollover but is actually just text.


**No code needed!**  
**How's it looking?**  
 We've made sure that our HTML has no bugs and supports the latest standards at every step, using Dreamweaver's error checker - but without having to know code.

# Tutorial: Create a stylish Web site

Discover the easy way to build a Web site that has both style and substance in the first of a two-part series on Dreamweaver MX



**Aim of this section**  
**Task:** Design a stylish Web site with Dreamweaver MX  
**Difficulty:** Beginner  
**Time needed:** 90 minutes

 Any time. Any place. Anywhere. Wherever anyone is in the world, provided they have access to the Internet, they can look at a Web site. As well as being a boon to companies wanting to show off their catalogues to get new customers, the Web has been great for home users who want to show off photographs without risking them getting lost in the post or who want to let everyone know about their Miami Vice obsession. Few Web sites are quite as nice as Apple's, though. Fortunately, the right tools can help provide a solid foundation for sites both simple and complex and here we're going to show you how to add style to that mix.

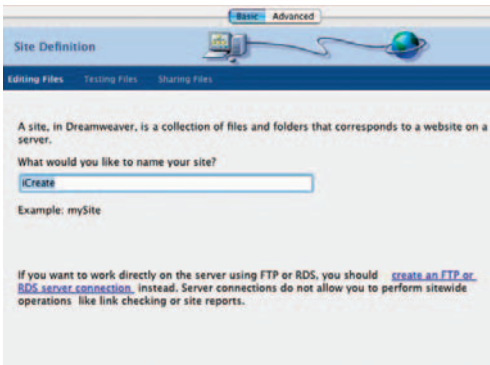
When people talk about Web design tools, Dreamweaver is the one most have in mind. Although GoLive and others have their proponents, look at any job ad for a Web designer and "experience with Dreamweaver" will be top of the requirements list.

Dreamweaver is an excellent tool and has a multitude of features that not only make it easy to put a site together, but also to ensure it follows the latest Web technology standards, is accessible to the disabled and, best of all, looks nice.

So, to give you a flavour of the Dreamweaver magic, we're going to walk you through setting up a site for the illustrious 'iCreate Consultants', Mac wizards extraordinaire. We're going to define the site in Dreamweaver, pick a look for the site, set up a template for the pages and then customise it by adding graphics, email links, links to other pages and text. We'll be doing all of this without having to know even the smallest amount of code - thanks to the WYSIWYG powers of Dreamweaver the whole process is as easy as formatting a Word document.

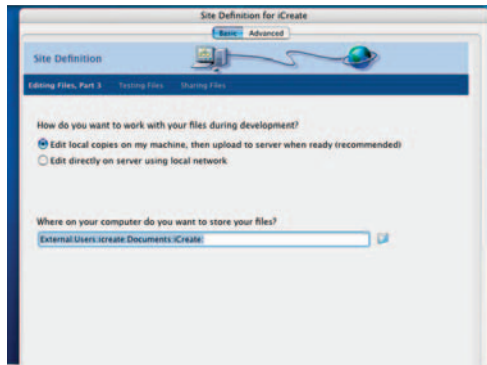
You'll find all the resource files needed to follow this project on the *iCreate* CD in the featured section.

# Step-by-step Dreamweaver MX Laying out the Web site



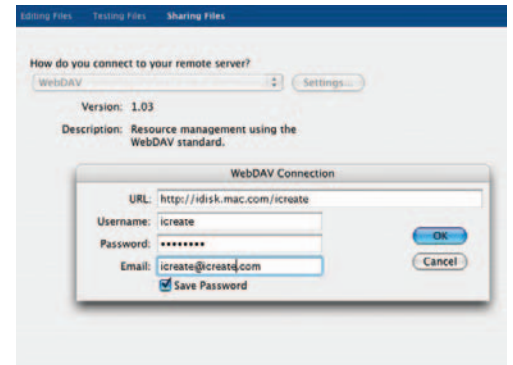
## 1: Off to see the wizard

Open the Site Definition wizard by clicking on 'Manage Sites' in the right-hand palette and clicking on 'New' and then 'Site' in the next dialog.



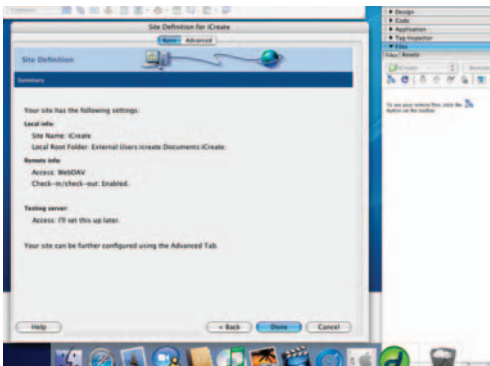
## 2: The name game

Give the site a name, then in the next dialog, click Next (no server technology for us!). Decide where you want to store the site on your hard drive.



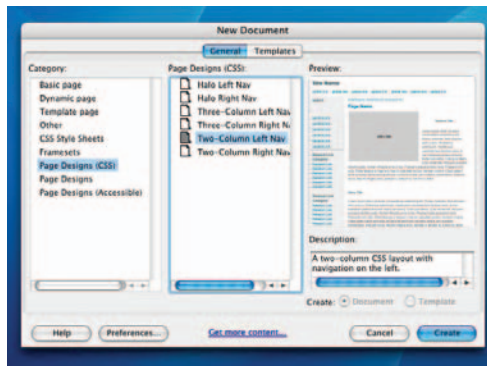
## 3: iDisk integration

Decide how you're going to upload your files to the server in the next dialog and enter the settings. You can modify these to use your iDisk.



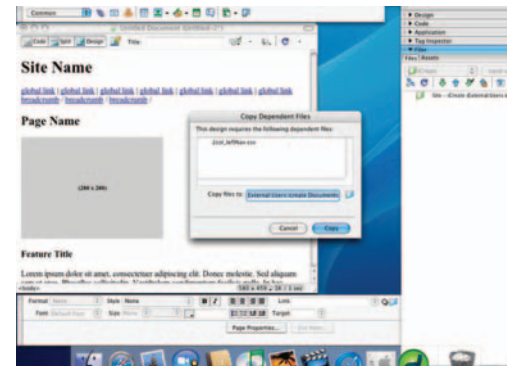
## 4: Finishing up

Accept the defaults in the next dialog and you're done. Dreamweaver will summarise your results and let you add more advanced settings, too.



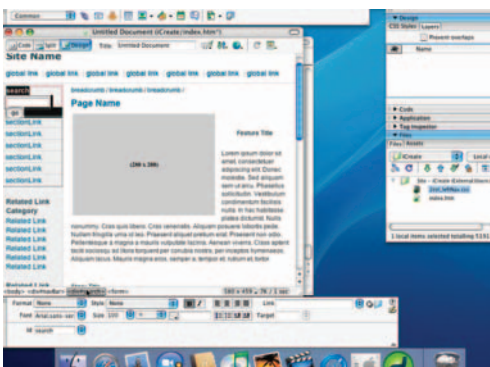
## 5: Customising the templates

We'll customise one of the built-in templates for our Web page. Select 'New' from the 'File' menu then 'Page Designs (CSS)' to find a suitable one.



## 6: Creating the site

Click on 'Create'. Save the file as index.htm and allow Dreamweaver to save the stylesheet, too. Double-click index.htm in the Files panel.



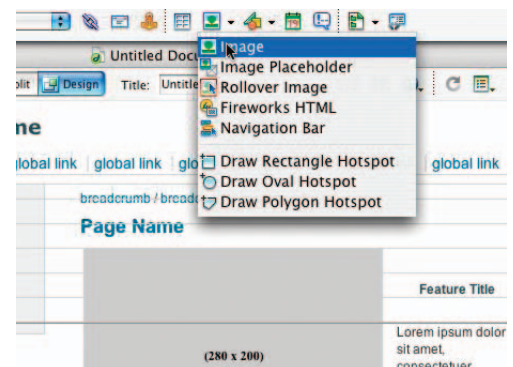
## 7: Chopping and changing

The template has more than we need so we can delete unwanted parts. Move your mouse over the Search area. Delete it when a red box appears.



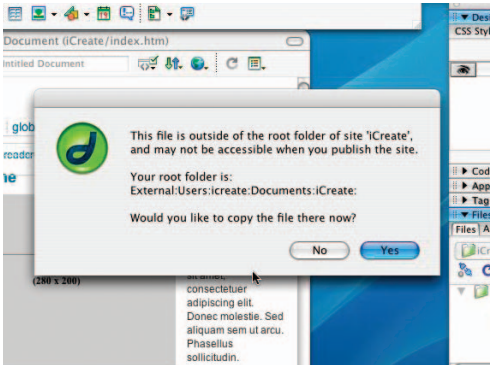
## 8: Delete more bits

Do the same with the related links, the headlines in the left-hand navigation column and the text at the bottom of the page.



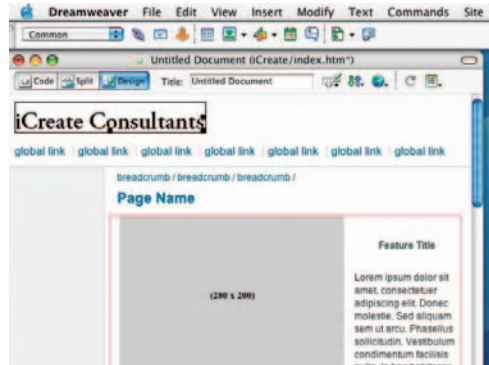
## 9: Show them the logo

Now let's insert the company logo. Position your cursor in front of 'Site Name' in the top left-hand corner and click on the painting icon in the toolbar.



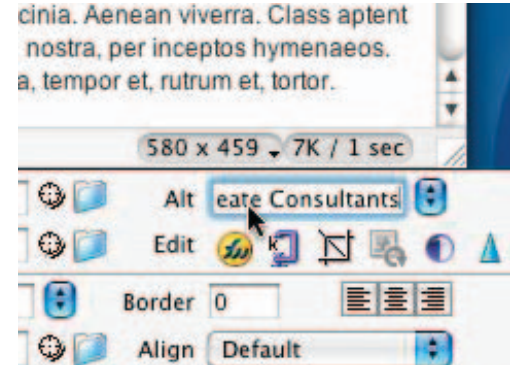
### 10: Copy the files

Select 'Image' from the menu and then locate the logo graphic. Since it isn't in the site folder, Dreamweaver will ask to copy it over. Let it.



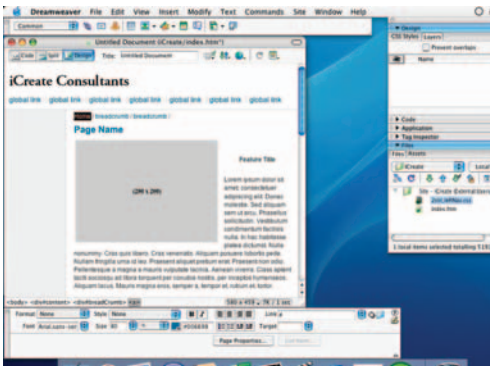
### 11: Link it

Delete the 'Site Name' text. Click on the logo. In the Properties bar, set the link to 'index.htm' so clicking the logo returns visitors to the home page.



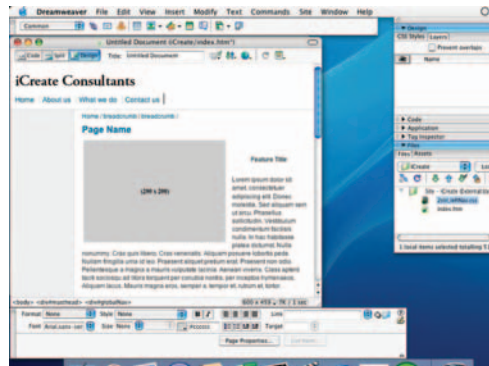
### 12: Explore the alternatives

In the Properties, set the Alt(ernative text) for the image to 'iCreate Consultants' so any browser not showing images will know what should be there.



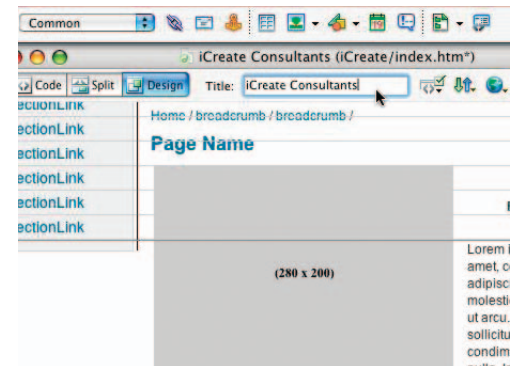
### 13: Breadcrumb navigation

Click the first of the 'breadcrumbs' in the middle of the page. Change the text to 'Home'. Highlight the new text and change the link to "index.htm".



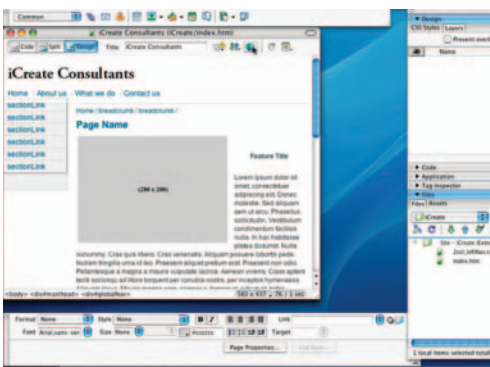
### 14: Change the global links

Change the global links to 'Home', 'About us', 'What we do' and 'Contact us'. Link them as 'index.htm', 'about.htm', 'what.htm' and 'contact.htm'.



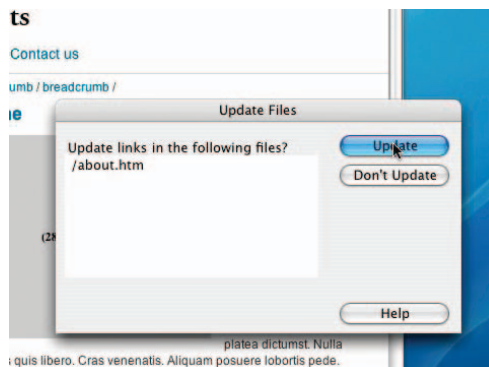
### 15: Finish the templates

Last of all, change the title of the page to 'iCreate Consultants' in the 'Title' box at the top. We now have a template for all the other pages.



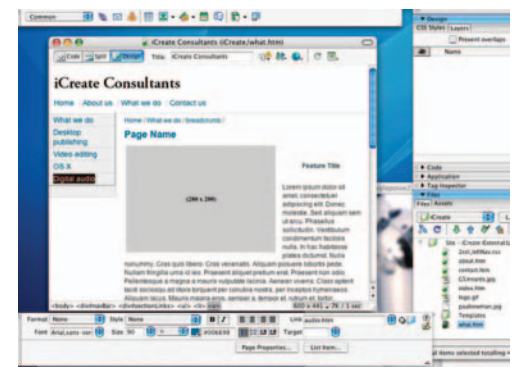
### 16: Duplicate the template

Highlight 'index.htm' in the Files panel. Use 'Apple+D' to create three duplicates. Name them 'about.htm', 'what.htm' and 'contact.htm'. Allow updates.



### 17: Open what.htm

Change the first 'breadcrumb' to 'What'. Link it to 'what.htm'. Change the links in the grey area as shown in 18. Link them to 'what.htm', 'desktop.htm' and so on.



### 18: Duplicate what.htm

Save the file. Create four duplicates. Rename the copies with the filenames in step 17. The site structure is created and we can now add content to the pages.

# Finding your way around Dreamweaver MX

**Flexible toolbar**

**A toolbar or two or three**  
The toolbar provides access to common HTML functions, but can also switch over to provide multimedia, forms, layout and database tools.

**Pick a panel**

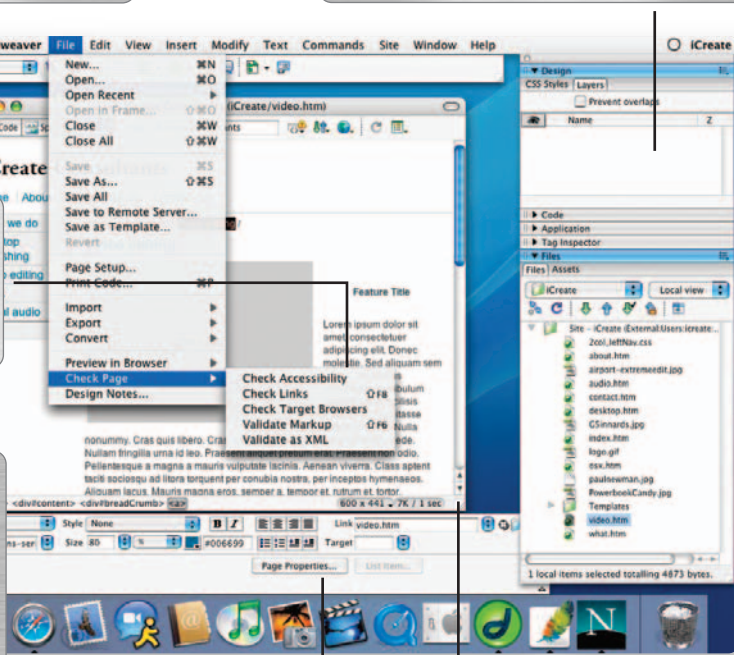
**All the tools you need**  
Dreamweaver's space-conscious panel system gives you access to all the advanced tools and site management functions in a simple stack down the side of the screen.

**Avoiding mistakes**

**Validate your choices**  
Nobody's perfect, so Dreamweaver can help check you haven't made any mistakes or that your layout won't look wrong in other browsers.

**Knowledge Base: What makes a successful Web site?**

**Content is king**  
A pretty Web site is nice to look at, but it won't be successful unless it's useful. If your site is pure eye candy, people will leave for sites that offer more. If your site structure, tiny font size and massive graphics stop people finding what they want, they'll Google for somewhere else in seconds. So make sure your site has useful content, that users can find the content without having to wear their mice out clicking, and it doesn't take more than eight seconds (the magic "this is too slow. I'm off" number, according to all sorts of studies) to load.



**Perfect properties**

**The measure of a layout**  
The Properties bar lets you customise elements on a page or the page itself, adjusting itself according to the element you have selected at the time.

**Size is important**

**ZZzz**  
If it takes forever to load, no one will see the nicest Web page ever written. Dreamweaver tells you when your page is too big for comfort.

## Jump into a good book

If your Web page has a lot of text, you may want to be able to link to a particular section of the text with a table of contents, for example. To do so, you'll need to place 'anchors' at the start of each of the sections.



1 Place the cursor at the point on the page that you want to link to.

2 Click on the anchor icon in the toolbar at the top (you'll need the 'common' tools selected).

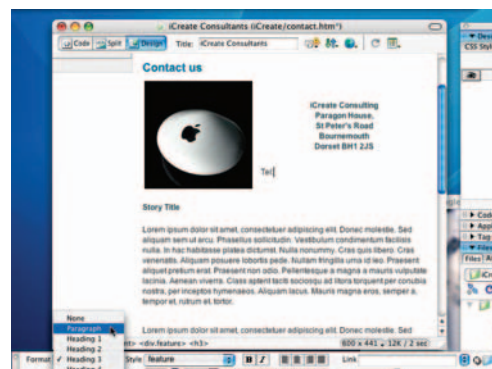


3 Give the anchor a name so that you can link to different anchors on the same page.

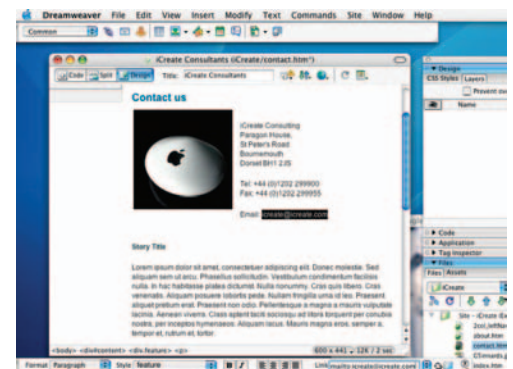
4 Set the link to '#anchor name'. Start with the page URL if the link is on a different page.



**19: Change the placeholder**  
Change the placeholder graphic on any page using the blue folder next to 'src' in the Properties bar. Resize it by shift-dragging the corner.



**20: Textual feeling**  
As you enter text, use the Properties bar to set whether it is paragraph text or a headline, what alignment it has and whether it is bold or italic.



**21: Create an email link**  
Allow people to email the site by highlighting the email address and typing 'mailto:' into the link box followed by the email address. We're done!